



# The Salt Company

Swakopmund, Namibia

HopSol

Solar Power Plants

Mr. J. Klein, owner of The Salt Company: "The climatic conditions at the Atlantic Ocean in Swakopmund are more than challenging since we are facing extreme salt mist, fog, humidity and storms as well as temperature differences. We are therefore happy to have chosen HopSol's CIGS technology with their experience in building solar power plants for this unique installation nearby the beach."

**189 kWp**  
System capacity

**349.65 MWh/yr**  
Expected output

**247 tons**  
CO<sub>2</sub> reduction / year

**1,260**  
Installed panels

**tsmc solar**

New Power.  
New Thinking.

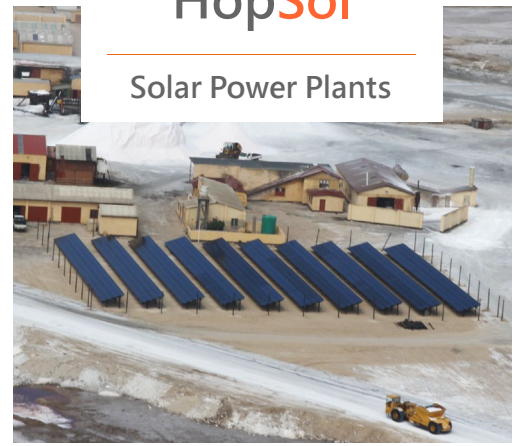
# The Salt Company

Swakopmund, Namibia

This photovoltaic solar power plant is located nearby the beach of Swakopmund's outskirts, ca. 500 m away from the Atlantic Ocean and in the middle of extensive salt pans. The plant was individually designed on wooden poles and wooden structures for these extreme surroundings and it is the first of its kind on Namibia's coast. The installation provides the Salt Company with energy equivalent to the electricity need of 50 family homes.

"The climatic conditions at the Atlantic Ocean in Swakopmund are more than challenging since we are facing extreme salt mist, fog, humidity and storms as well as temperature differences. We are therefore happy to have chosen HopSol's CIS/CIGS technology with their experience in building solar power plants for this unique installation nearby the beach." Said Mr. J. Klein, owner of The Salt Company.

Namibia has one of the highest solar irradiation levels in the world. At the same time, high temperatures combined with below-zero nighttime temperatures, sand abrasion and wind storms challenge the solar modules to an extreme extent. The right technology is essential in order to withstand these conditions and still deliver excellent performance. According to HopSol's tests CIS/CIGS technology is the best choice.



## Installation

Location	Swakopmund/ Namibia
Coordinates	Lat -22, 598034 Long 14, 524229
Average global irradiance	2050 kWh/m <sup>2</sup> /yr
Average temperature	15°C
Average rainfall	37.1 mm

## Technical Specifications

System capacity	189 kWp
Panel type	TSMC (TS-150C1)
Quantity of installed panels	1,260
Total CO <sub>2</sub> saved	247 tons per year
Inverters	10 x Sunny Tripower STP 20000 TL-10
Expected annual energy output	349.65 MWh/yr
Date of inauguration	February 2014

### About TSMC Solar

TSMC Solar Ltd. is a wholly-owned subsidiary of Taiwan Semiconductor Manufacturing, Inc. (NYSE: TSM), the acknowledged semiconductor dedicated foundry segment leader with market capitalization exceeding \$90 billion. TSMC's solar business was founded in May 2009 and is headquartered in Taichung, Taiwan, with regional sales offices in Hamburg, Germany; San Jose, California and Boston, Massachusetts. Visit us at [www.tsmc-solar.com](http://www.tsmc-solar.com)!

### About HopSol

HopSol provides turn-key solutions for photovoltaic solar power plants. HopSol's head office is located in Wilen, Switzerland and the headquarter for the southern African region, HopSol Africa (Pty) Ltd, has been established in Windhoek, Namibia. HopSol has specialized in photovoltaic solutions for deserts and desert-like regions and acts as a wholesaler of all relevant parts for photovoltaic solar power solutions. Due to the specific climatic conditions in desert regions the selection of the right technology is decisive in order to ensure an outstanding economic performance of investments in solar power plants. Therefore HopSol trusts in superior quality CIS/CIGS-modules as one crucial success factor. For further information please visit [www.hopsol.com](http://www.hopsol.com).